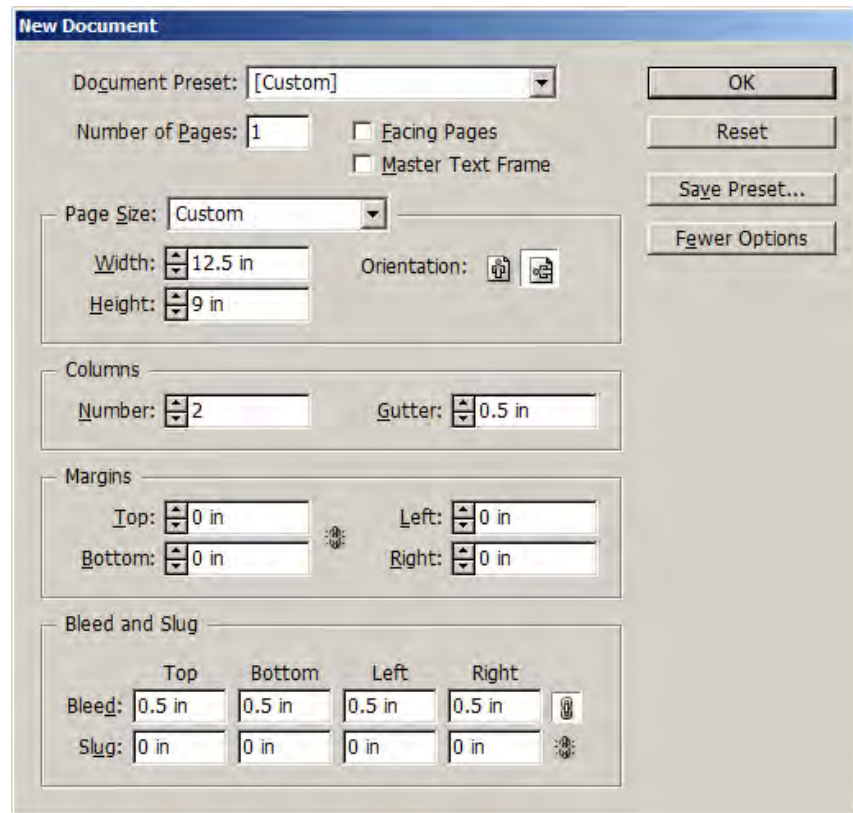


Crop marks are created when you export to PDF.

Draw in your spine marks with a .5 pt dashed rule and offset them by 1/8"

Bleeds extend beyond the final trim by 1/8"



This document uses InDesign, but the concept works with Quark XPress, as well.

To create a cover spread:

Your book size is 6 × 9, with a 1/2" spine bulk (for example)...
So your document **Width** would be: 6 + .5 + 6 = **12.5"** — **Height is 9"**
(page width + spine bulk* + page width × page height)

* Notice that the "Columns" feature is used to create the spine area of your cover. This makes it a snap to center your elements or butt them to the front and back covers. (Contact Customer Service to find out the specs to calculate your spine bulk. You will need to know your page count.)

Set your document bleed to 1/2". This will allow you to draw in spine marks, even though your actual *image* bleed is only 1/8" beyond your final trim. Offset the spine marks by 1/8" (don't let them touch your cover area). *Spine marks are important so there is no guesswork on the printer's part about where your spine falls, especially if you don't have elements that butt or otherwise show a clear delineation.*

Cover 4

Author

Title of Your Book
Subtitle of Your Book

Spine

Final Trim

Title
of
Your Book
Subtitle of Your Book

See the document
"Exporting Your Cover Spread to PDF"
for the best settings to use for printing.

Your Name

Cover 1